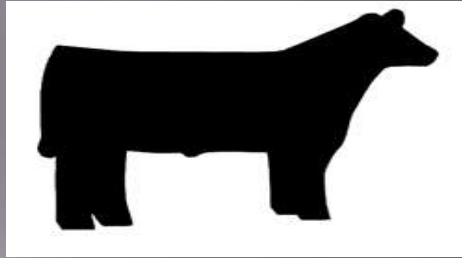


RED HILL FFA CLASSIC

Steer and Heifer Show



Saturday March 13th 2010

Show Starts at 12:30 pm

IBA Points Sanctioned Show

Judge: Justin Adcock

Location: Lawrence County Jr. Fairgrounds Located
between Bridgeport and Sumner IL on US Hwy 50

\$350 Grand Champion Steer and Heifer

\$250 Reserve Grand Steer and Heifer

Entry Fee \$35/hd

Rules:

1. Exhibitors must be 8 yrs old and no older than 21 the day of show
2. Five head required to make a breed
3. Steers and Crossbred heifers will be weighed
4. Health Papers required. Registration Papers required on all Purebreds
5. Cattle may arrive starting Friday March 12th from 4-7 pm and must be on the grounds by 9 am Saturday March 13th
6. No outside bedding. Bedding will be provided.
7. No Artificial hair or Pumping
8. No alcohol allowed on the fairgrounds
9. The Red Hill FFA and the Lawrence County Fair are not responsible for accidents

For More Information or questions Contact:

Steven Clodfelter (618) 928-1022 Breanna Smith (618) 928-4878

Caitlyn Bowver (618) 973-6138